

Cherish Water Campus

惜水學堂

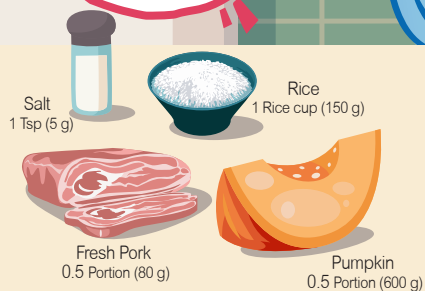
ISSUE **17**
APR 2022

Water Saving Chef Stay Home Safe

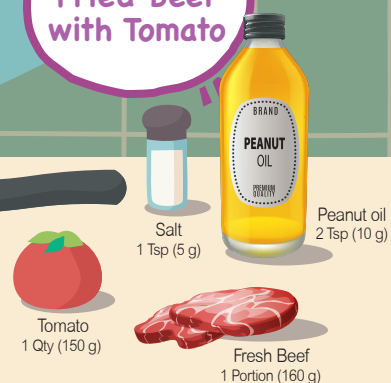
During the COVID-19 outbreak, people tend to cook at home.
Do you know how much water is required for preparing a meal?
Or do you know which ingredient consumes less Virtual Water?



1st dish Pumpkin Congee with Pork



2nd dish Fried Beef with Tomato



Quiz

Virtual Water is the amount of water embedded in the production and transportation of products. Can you guess how much Virtual Water is required for the meals above? (Tips: You can find the answer from 'Water Footprint calculator' webpage)



水務署

Water Supplies Department

5 Water Saving Tips in the Kitchen



Don't over-purchase and waste food



Avoid thawing food under running water. Defrost it earlier inside refrigerator instead



Reuse the water after washing vegetables and fruits to water plants



Don't wash dishes under running taps



Eat more vegetables and fruits, but less meat



In fact, we have used lots of Virtual Water in respect of clothing, food, living and travel. We can reduce water consumption by making smart choices in purchase and wisely consuming products/food that require less water for production without wastage.

"CHERISH WATER" NOTICE BOARD

Creative Water Saving Meal Design

Hi students, you are invited to share your water saving meal with us. Selected entries will be shared on WSD's Water Conservation website and a souvenir will also be given as a token of appreciation.

Way to Join

Please draw your water saving meal on A4 size paper and send to waterconservation@wsd.gov.hk with the following details.
(Email Subject: "Cherish Water Campus" Creative Water Saving Meal Design)

- Name
- School name
- Class
- Contact information

Deadline

30 June 2022

Prize Quiz for 3D movie "Water Journey"

In light of the COVID-19 epidemic, the submission deadline of Prize Quiz for 3D movie "Water Journey" in "Cherish Water Campus" newsletter issue no.16 has been extended to 30 June 2022.

Draw Your Water Saving Meal

The name of meal: XXXXXXXX

Ingredient: XXX · XXXX · XXX · XXXX

Way of cooking: XXXXXXXXXX

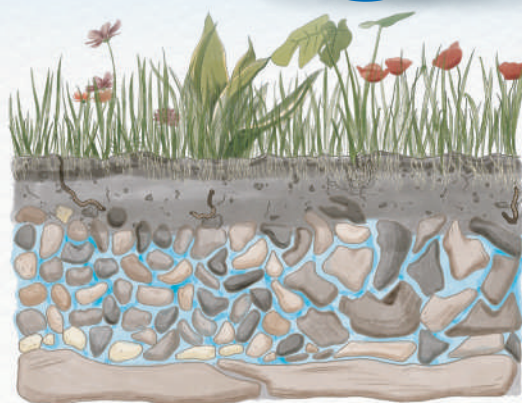
Required virtual Water: XXXX ml

“Cherish Water” Big Day

World Water Day 2022
Theme: Groundwater

Groundwater

feeds springs, rivers, lakes and wetlands, and seeps into oceans. It is recharged mainly from rain and snow fall infiltrating the ground.



Source:

www.worldwaterday.org

The UN World Water Development Report 2022



When is World Water Day?

The World Water Day is set as 22 March by the United Nation since 1993 to draw attention to the importance of fresh water.



The theme of this year is ‘Groundwater’. Why is groundwater important?

Life would not be possible without groundwater. Most arid areas of the world depend entirely on groundwater. It already provides half of the volume of water withdrawn for domestic use by the global population, and around 25% of all water withdrawn for irrigation, serving 38% of the world’s irrigated land.



What can we do to preserve groundwater?

Groundwater is essential but its importance could not fully recognised. We must protect groundwater from pollution and use it sustainably, which balancing the needs of people and the planet.

Hi all, do you know WSD Water Leakage Detection Centre has been opened in July 2021? Do you know the main function of this new facility?

Water Saving Initiative in Our Community



I know! Leaks in water mains always detected in HK which wastes lots of precious fresh water. It is Q-Leak, the underground water mains leak detection training centre. The “Q” highlights triple implications:

- **“Quality”** The high quality of water mains leak detection
- **“Qualification”** The assessment of water mains leak detection qualification
- **“(Kill) Leak”** The elimination of water leakage to reduce the leakage rate

It serves to facilitate relevant training for more leak detection practitioners, aim to enhancing the effectiveness of leak detection and reducing water loss.

Prevent water leakages from water mains, MAKE EVERY DROP COUNT



Masterpieces Showcase



Teachers are welcome to send us the masterpieces from your students.



Parent-child Slogan Design (Chinese Only)

潔淨食水得來真不易，
水喉長開浪費食水唔可以，
節約用水其實好EASY，
大家齊來慳水多一D。

W F Joseph Lee Primary School
1D Chang Cing Yee

地球供水期有限，
人們用水量無限，
珍惜食水齊效法，
節約用水有辦法。

W F Joseph Lee Primary School
1E Wong Chin Yu

Notice/Poster Design



6B Lee Chi Man
Precious Blood Primary School
(Wah Fu Estate)



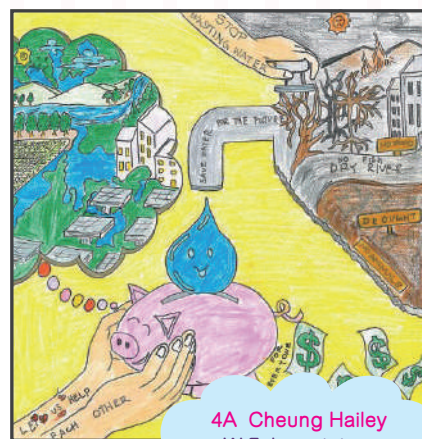
6C Hugo Li Man Chiu
Precious Blood Primary School
(Wah Fu Estate)



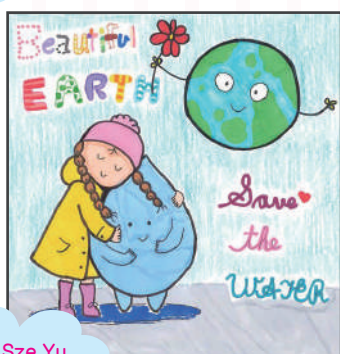
2A Sum Kwan Yin
W F Joseph Lee Primary School



2A Tsui Yuk Hei
W F Joseph Lee Primary School



4A Cheung Hailey
W F Joseph Lee Primary School



4E Yau Sze Yu
W F Joseph Lee Primary School

Flow Controller Design



5D Mak Hiu Hin
W F Joseph Lee Primary School